

The Fortunate Rogaine

WARA Autumn 12 Hour Rogaine 4th April 2009

Incorporating the Paddy Pallin Junior Challenge



Department of Sport and Recreation



Setters and Vettors

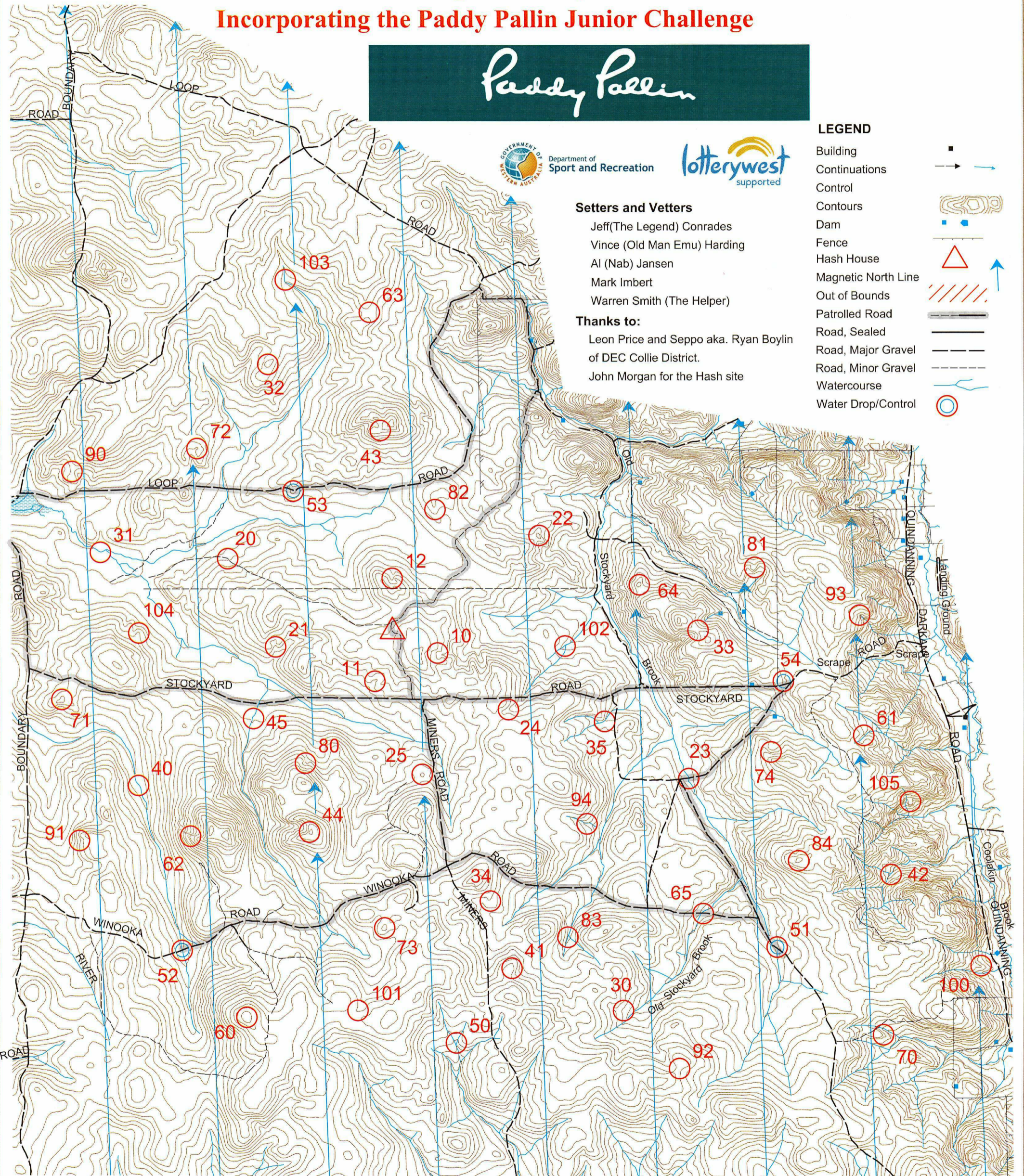
- Jeff (The Legend) Conrades
- Vince (Old Man Emu) Harding
- Al (Nab) Jansen
- Mark Imbert
- Warren Smith (The Helper)

Thanks to:

- Leon Price and Seppo aka. Ryan Boylin of DEC Collie District.
- John Morgan for the Hash site

LEGEND

- Building
- Continuations
- Control
- Contours
- Dam
- Fence
- Hash House
- Magnetic North Line
- Out of Bounds
- Patrolled Road
- Road, Sealed
- Road, Major Gravel
- Road, Minor Gravel
- Watercourse
- Water Drop/Control



SCALE 1:50,000, 5 metre contour interval



This map was produced using OCAD 9 by the Western Australian Rogaining Association, wa.rogaine.asn.au. Data supplied by Landgate and used under copy licence 393/93. Possession of this map does not give right of entry to this area.

WARA 12 Hour **Fortunate Rogaine** Incorporating the 2009 Paddy Pallin Junior Cadet Challenge - 4th April 2009

No.	Description	Points	No.	Description	Points	Important Information	
10	The Northern Gully	10	60	The Knoll - Broad	60	Control Cards From 0930 Saturday (9:30am)	
11	The Gully	10	61	The Watercourse	60		
12	The Gully	10	62	The Spur	60		
			63	The Saddle	60		
20	The Track Bend	20	64	The Rocky Knoll	60		Briefing 0945 Saturday (9:45am)
21	The Gully	20	65	Track/Watercourse Junction	60		
22	The Knoll	20					Start 1000 Saturday (10:00am)
23	The Track watercourse Junction	20	70	The Spur	70		
24	The Gully	20	71	The Knoll - Broad	70		
25	The Knoll - Broad	20	72	Head of the Shallow Gully	70		
			73	The Knoll	70	Finish 2200 Saturday (10:00pm)	
30	A Watercourse	30	74	The Shallow Gully	70		
31	The Watercourse/Clearing Junction	30				Hash House 1600 Saturday (4:00pm)	
32	The Summit	30	80	The Gully - Shallow	80		
33	The Saddle	30	81	The Rocky Spur	80		
34	The Spur	30	82	The Spur	80		
35	The Watercourse	30	83	The Watercourse Junction	80		
			84	The Broad Knoll	80	Sunset 1907	
40	The Watercourse	40					
41	The Spur - Broad - east side	40	90	The Saddle	90	Moonrise 1550	
42	The Watercourse Junction	40	91	The Gully - Shallow	90		
43	A Saddle	40	92	The Saddle	90		
44	The Knoll	40	93	Head of the Watercourse	90	Moonset 0130	
45	The Watercourse	40	94	The Watercourse	90		
						Late Penalty 10 points per minute or part minute. LATE (no points) later 10:30pm Sat 19th April	
50	The Watercourse Junction	50	100	The Spur - North side	100		
51	The Track/Watercourse Junction	50	101	The Gully - Shallow	100		
52	The Track/Watercourse Junction	50	102	The Watercourse Junction	100		
53	The Spur/Track Junction	50	103	The Watercourse Bend	100		
54	The Shallow Gully (water - 85 metres sth/west)	50	104	The Spur	100		
			105	A Knoll - North/East Side (Legend's Leap)	100		
						Controls Used 53	
		820			2160	Total Points 2980	
Water Drops: At Controls 50, 52, 53, 54 If you are injured please make your way to a water drop or a patrolled road and wait there for help.			Patrolled Roads. See roads indicated on the map:				